



## Create a DataSource Demo

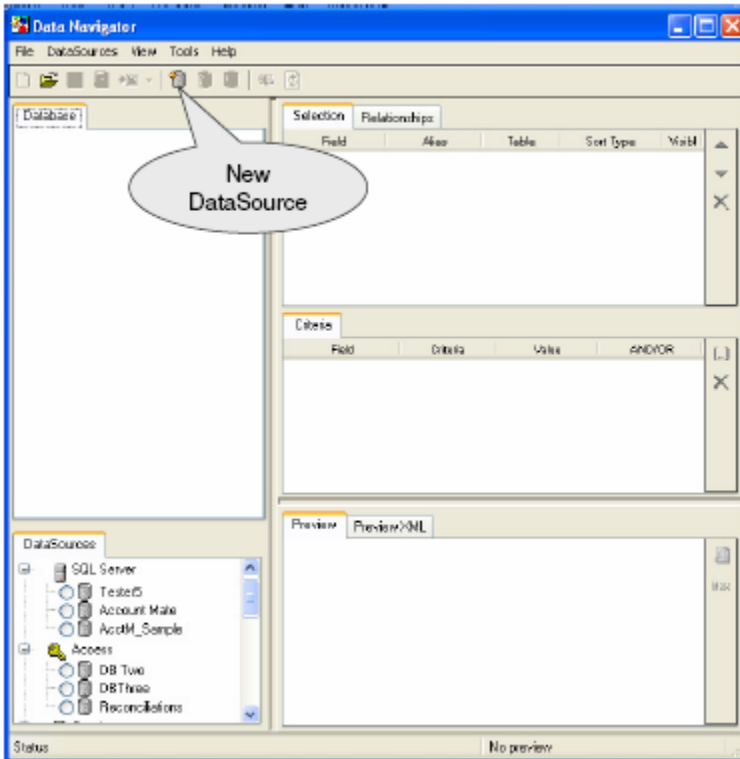
A Single View to All your Data! *How do you talk to your data?*

### Preliminary Steps:

- Install Office 2000 or above
- Install Windows 2000 or above
- Install Dot.Net framework
- Install DataLinks Series applications

### Steps A – D, It's this easy:

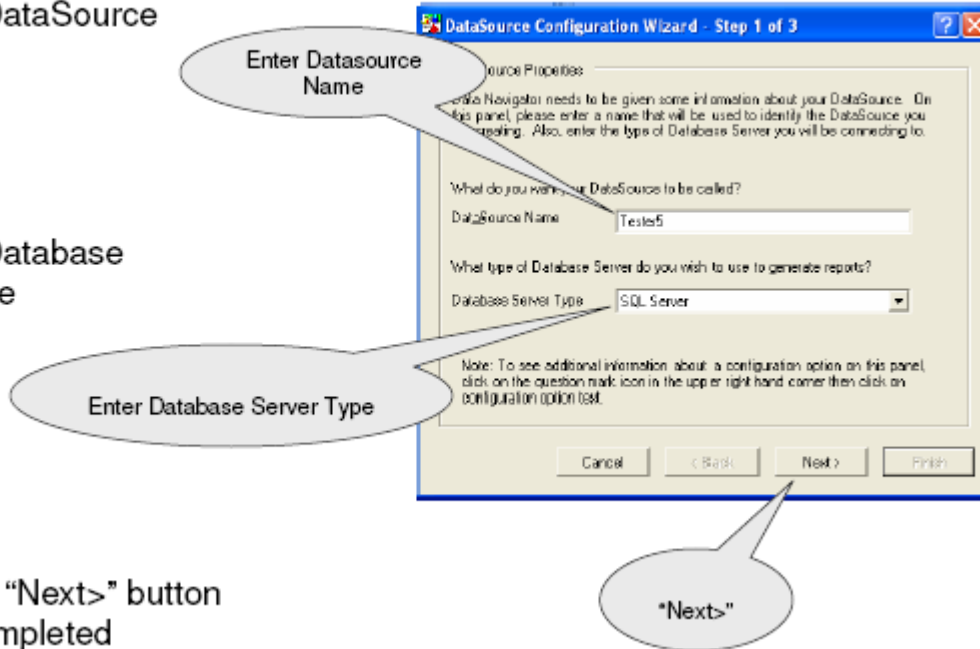
- A. Create a DataSource connection
- B. Select the fields and criteria for your report
- C. Export to Excel and create your report
- D. Refresh your DataLinks report



**Step 1:**  
Click the New DataSource Icon

**Step 2:**  
Enter the DataSource Name

**Step 3:**  
Enter the Database Server Type



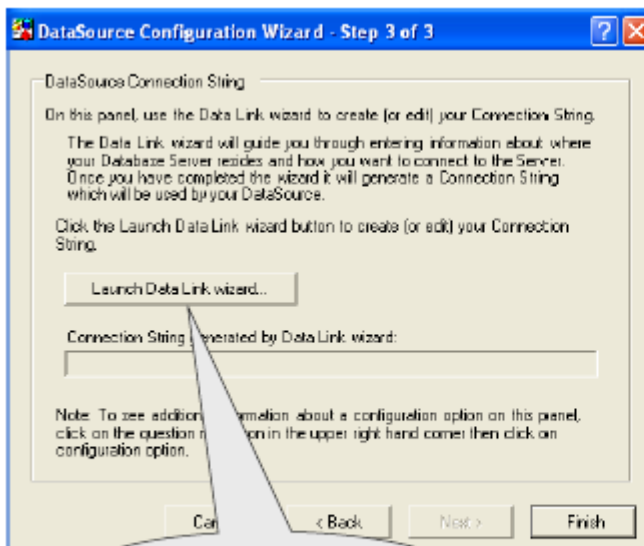
**Step 4:**  
Click the "Next>" button when completed



Continue by clicking "Next"

**Step 5:**

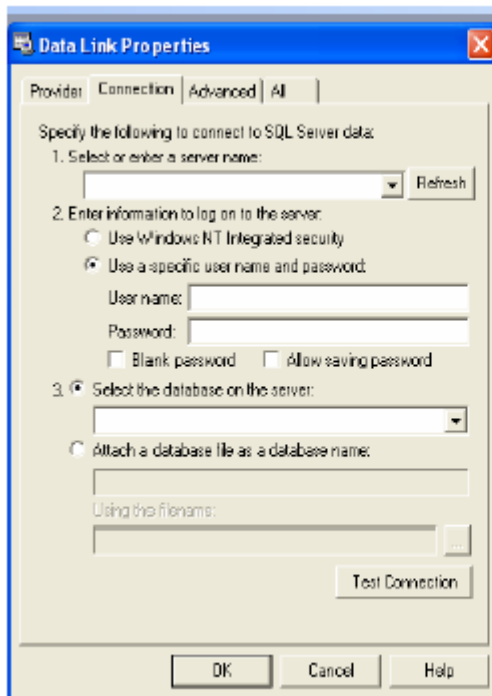
Click the "Next>" button to continue



Launch Data Link wizard

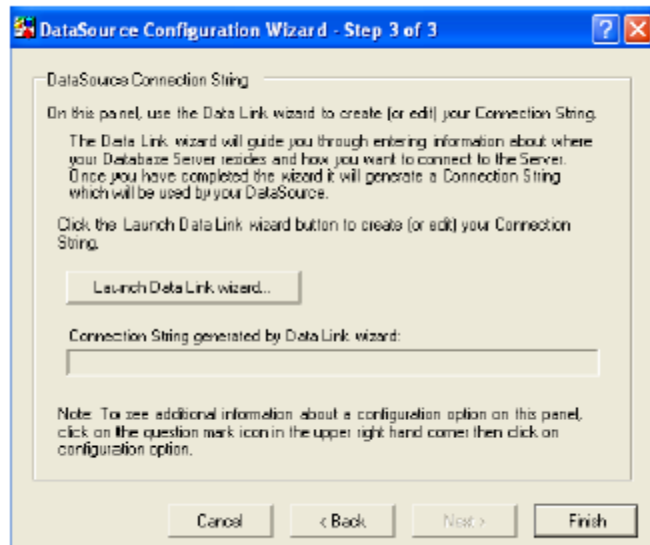
**Step 6:**

Click the "Launch Data Link wizard" button to continue



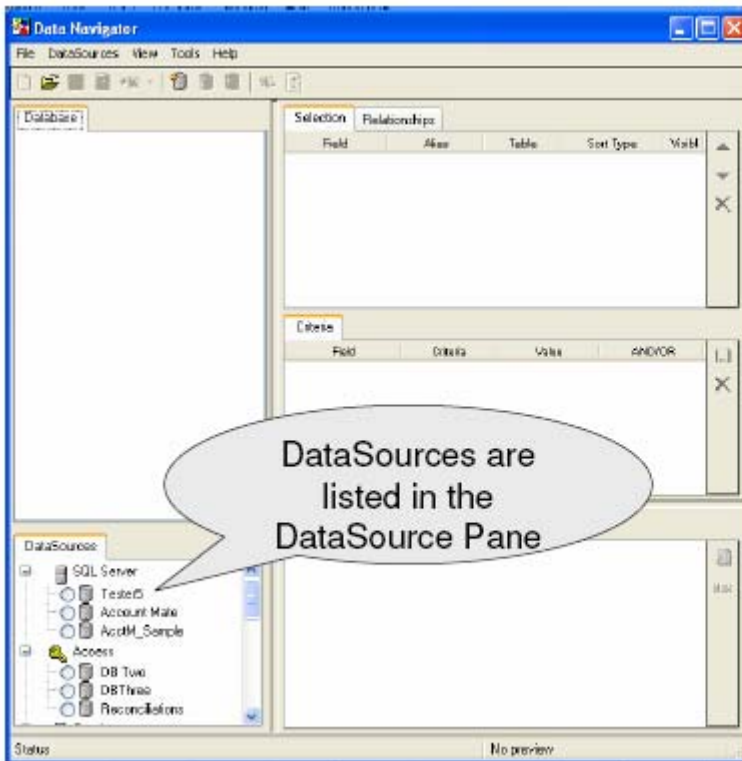
### Step 7:

Complete the required fields for your datasource and click "OK"



### Step 8:

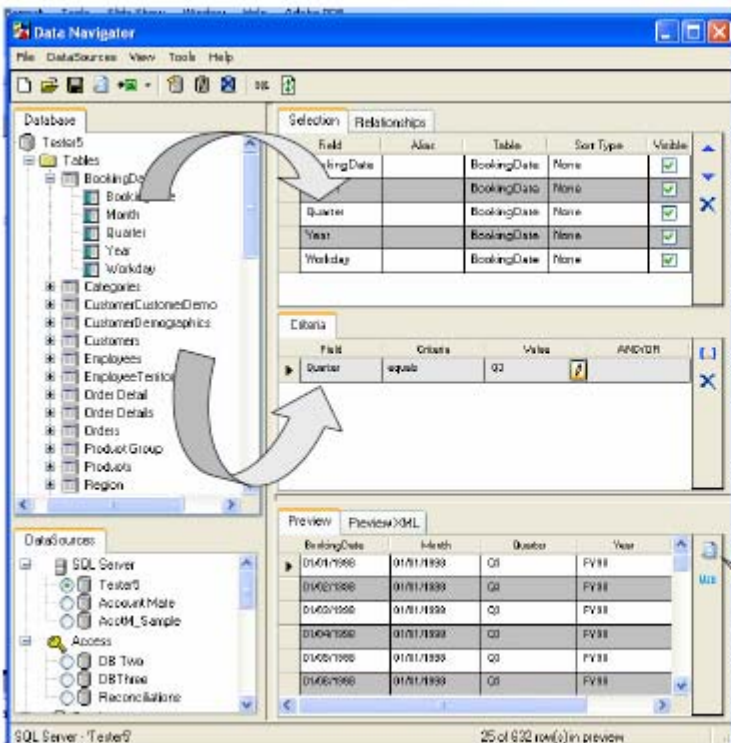
Click "Finish" to continue



**Step 9:**

After Steps 1-8 are completed your datasource will be configured and reflected in the DataSources pane, ready for use

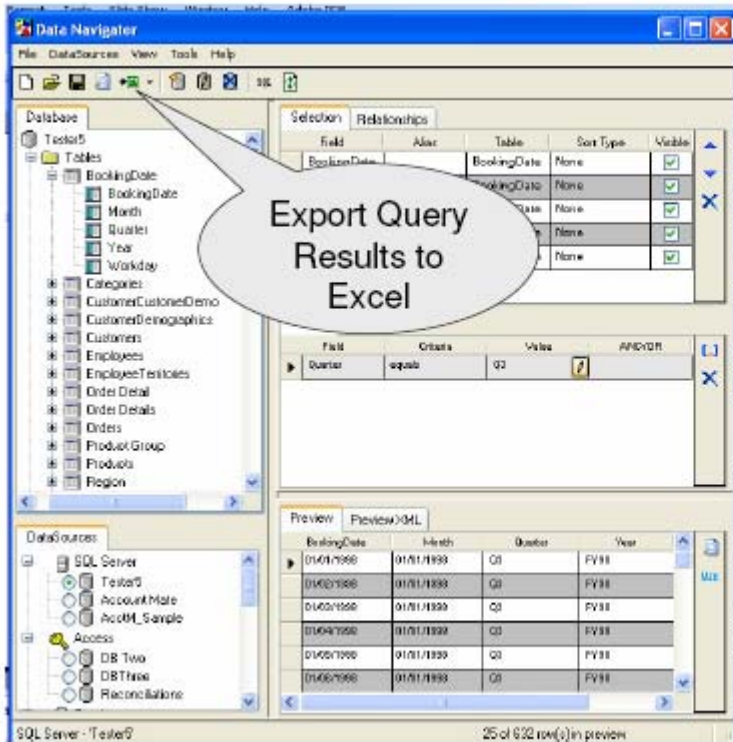
Select the DataSource in the pane to continue



**Step 10:**

Select your DataSource and the Database pane will populate with Schemas, Tables, Views, and their fields

Select desired fields for report and add criteria to constrain the data in the report simply by dragging and dropping



**Step 11:**

Simply select the export to Excel icon and follow the wizard as desired

